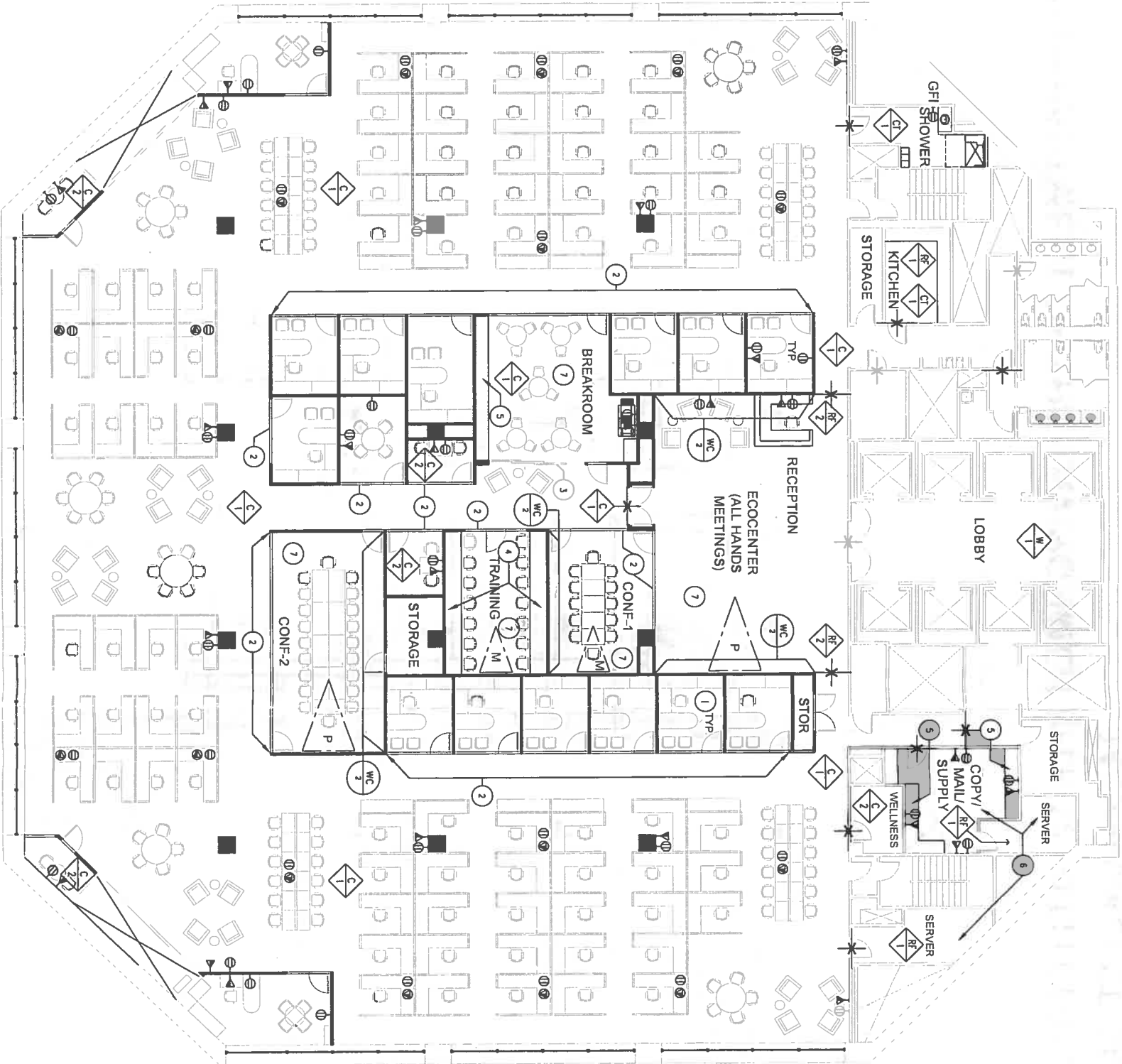


- NOTES**
- ALL DOORS TO BE 3' X 9' PLYBOO BAMBOO AMBER EDGE GRAIN VENEER.
ALL DOOR FRAMES TO BE CLEAR ANODIZED ALUMINUM.
ALL DOOR HARDWARE TO BE SCHLAGE BRUSHED STAINLESS STEEL FULL MORTISE HARDWARE



TOTAL	144
OFFICES	15
WORKSTATIONS	81
OTHERS/ INTERNS	48

SAN FRANCISCO DEPARTMENT OF THE ENVIRONMENT FLOOR 12 PLAN

1455 MARKET ST, SAN FRANCISCO, CA

31 MAY 12 REV
1:20

FINISHES

- CARPET TILE - SHAW CONTRACT DISPERSE - RANDOM INSTALLATION
- CARPET TILE - SHAW CONTRACT TRUE COLORS - MONOLITHIC INSTALLATION
- CERAMIC TILE - FIRECLAY DEBRIS SERIES 3' X 6" (SPASH) AT KITCHEN FLOOR AND SHOWER
- RESILIENT FLOORING - FORBO MARMOLEUM COMPOSITION TILE
- RESILIENT FLOORING - CAPRI, MEDITERRA CORK TILE, 12' X 24" PICK UP STRIPS DARK
- WOOD FLOORING - DURA PALM PREFINISHED, COCONUT FLAT GRAIN 5/8" TH, X 3" W
- WINDOW COVERINGS - FLIZFELT PERFORATED PANELS 5MM WOOL DESIGN FELT
- WALL COVERING - FLIZFELT 5MM WOOL DESIGN FELT

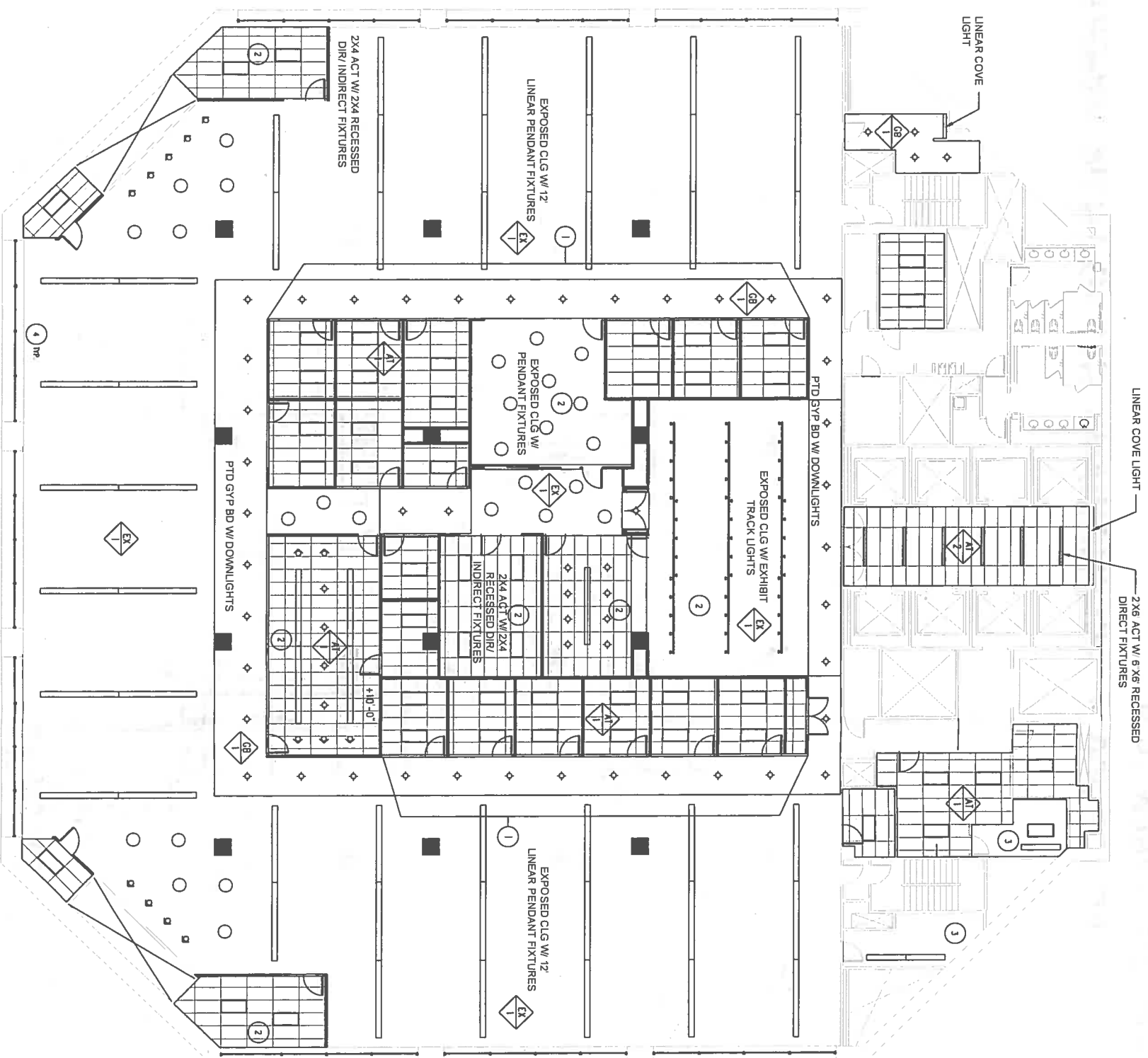
POWER/ TELEDATA / AV (USE FLOOR CELL SYSTEM AS MUCH AS POSSIBLE)

- FLUSH FLOOR POWER OUTLET
- FLUSH FLOOR TELEDATA OUTLET
- WALL MOUNTED POWER OUTLET
- WALL MOUNTED TELEDATA OUTLET

- AV FLAT SCREEN MONITOR
- AV PROJECTOR & SCREEN

KEY NOTES

- TYPICAL FOR PRIVATE OFFICES. PROVIDE SLAB TO CEILING HEIGHT GYPSUM BOARD PARTITIONS WITH INSULATION, TYP.
- DOOR HEIGHT GLASS IN CLEAR ANODIZED ALUMINUM FRAMES WITH BUTT JOINTS AT INTERMEDIATE PANELS.
- SLIDING GLASS DOORS IN CLEAR ANODIZED ALUMINUM FRAMES WITH WC-1 WINDOW COVERING AT CONFERENCE ROOMS AND BREAKROOM
- PLAM COUNTERTOP WITH VERTICAL PLAM SUPPORTS
- PLAM COUNTERTOP WITH PLAM CABINETS AND MELAMINE INTERIORS
- PROVIDE POWER AND TELE DATA AS PER CLIENT SPECS
- PROVIDE DECK TO DECK GYPSUM BOARD WALLS WITH INSULATION IN THESE ROOMS. BREAK ROOM, ECO CENTER, RECEPTION AREA AND CONFERENCE ROOMS.



FINISHES

- AI 1 2'x4' ACOUSTIC TILE
- AI 2 2'x6' ACOUSTIC TILE
- CB 1 PAINTED GYP BOARD
- EX 1 EXPOSED CEILING

LIGHTING

- ◇ DOWNLIGHT
- ◇ WALLWASHER
- PENDANT FIXTURE
- ▭ 2'x4' RECESSED DIRECT/ INDIRECT FIXTURE
- ▭ 6' x 6' RECESSED LINEAR FIXTURE
- ▭ RECESSED LINEAR WALLWASHER
- ▭ 6' LONG SUSPENDED DIRECT/ INDIRECT LINEAR FIXTURE
- ▭ 12' LONG SUSPENDED DIRECT/ INDIRECT LINEAR FIXTURE
- ▭ SUSPENDED TRACK LIGHTS

NOTES

1. ALIGN, ORGANIZE & COORDINATE ALL EXPOSED CEILING SYSTEMS INCLUDING DUCTS, PIPES, CABLE TRAYS, ETC.
2. PAINT ALL EXPOSED CEILING SYSTEMS INCLUDING DUCTS, PIPES, CABLE TRAYS, ETC.
3. 2' x 4' ACT AT 9'-0" UNLESS OTHERWISE NOTED

KEY NOTES

- 1 GROUP INTERIOR OFFICES INTO ONE MECHANICAL ZONE.
- 2 PROVIDE SEPARATE MECHANICAL ZONE FOR THESE ROOMS.
- 3 PROVIDE 24/7 AC IN SERVER ROOMS WITH ONE AC UNIT WITH CONNECTING DUCT INTO TWO ROOMS.
- 4 DAYLIGHT CONTROL AT PERIMETER.

SAN FRANCISCO DEPARTMENT OF THE ENVIRONMENT FLR 12 REFLECTED CEILING PLAN

1455 MARKET ST, SAN FRANCISCO, CA

25 MAY 12
1:20